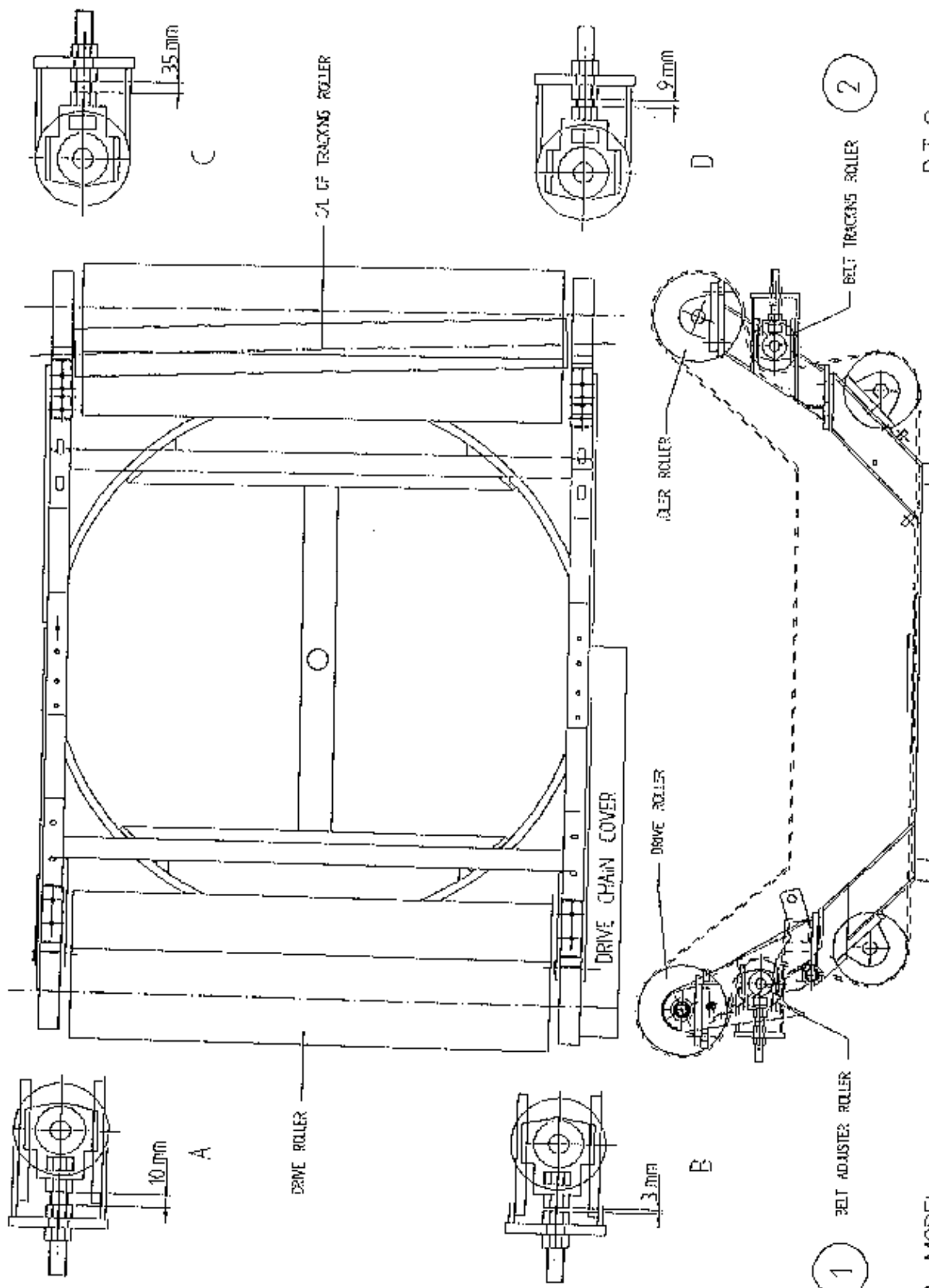


**TANCO AUTOWRAP
1250 A MODEL 1994
OPERATORS HANDBOOK
AND
PARTS LIST
WD65-1250-A-M0594**

000

000

C C

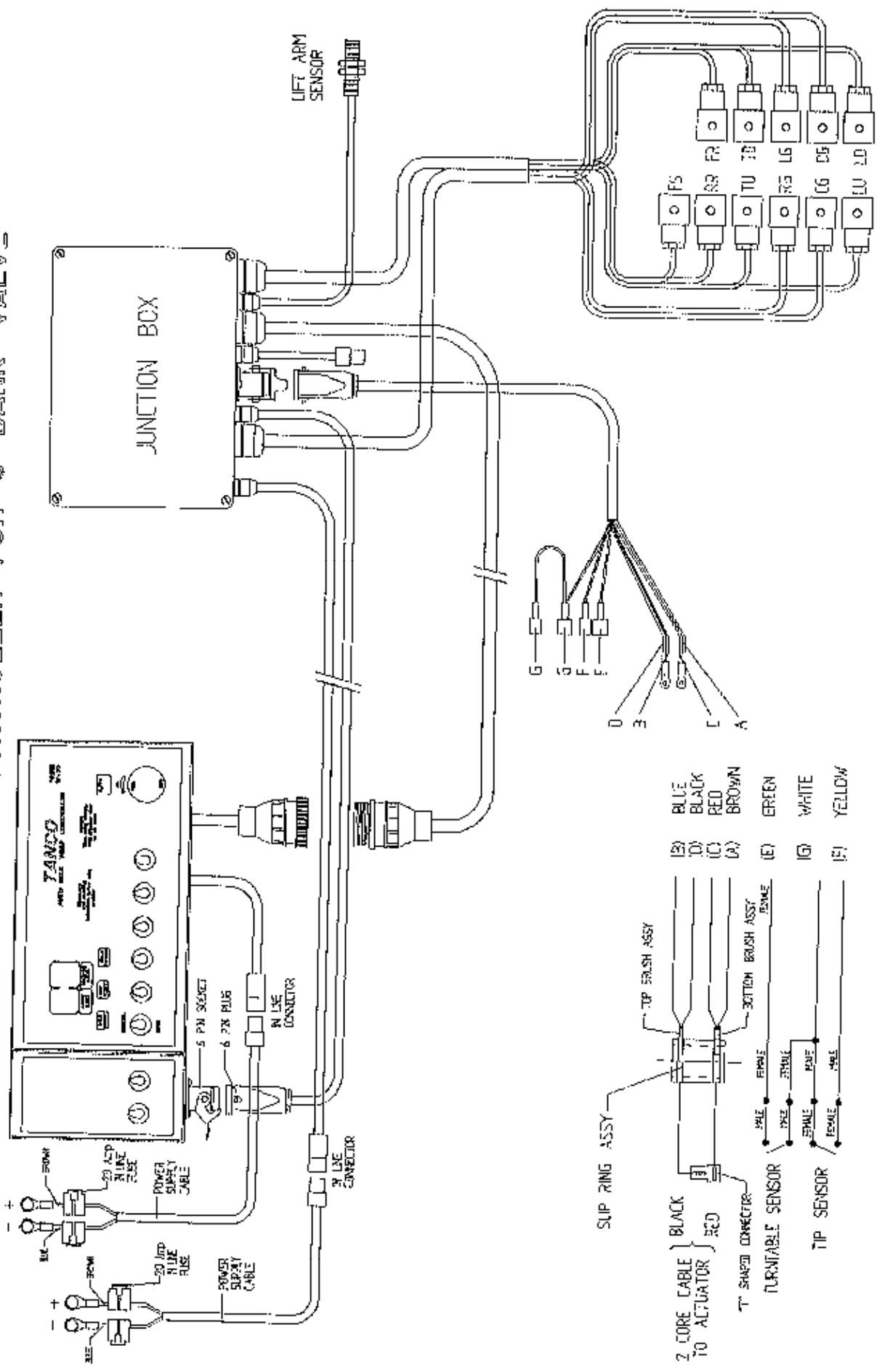


1250 MODEL

B.T.2

FILE NAME 9228B

**TANCO AUTOWRAP 1250 A MODELS
JUNCTION BOX AND CONTROLLER FOR 5 BANK VALVE**



TANCO AUTOWRAP 1994 DRIVE BELT TENSIONING SYSTEM

BELT TENSIONING PROCEDURE

1. CHECK THAT HYDRAULIC MOTOR MOUNTING BRACKET IS SECURE IN POSITION.
2. LOOSEN M10 BOLT WHICH CLAMPS BELT TENSIONER BODY TO MOTOR MOUNT.
3. TENSION BELT BY ADJUSTING TENSIONER USING SPANNER IN DIRECTION OF ARROW "X" UNTIL SETTING OF 30 IS REACHED.
4. RE-TIGHTEN M10 BOLT TO SECURE TENSIONER IN POSITION.

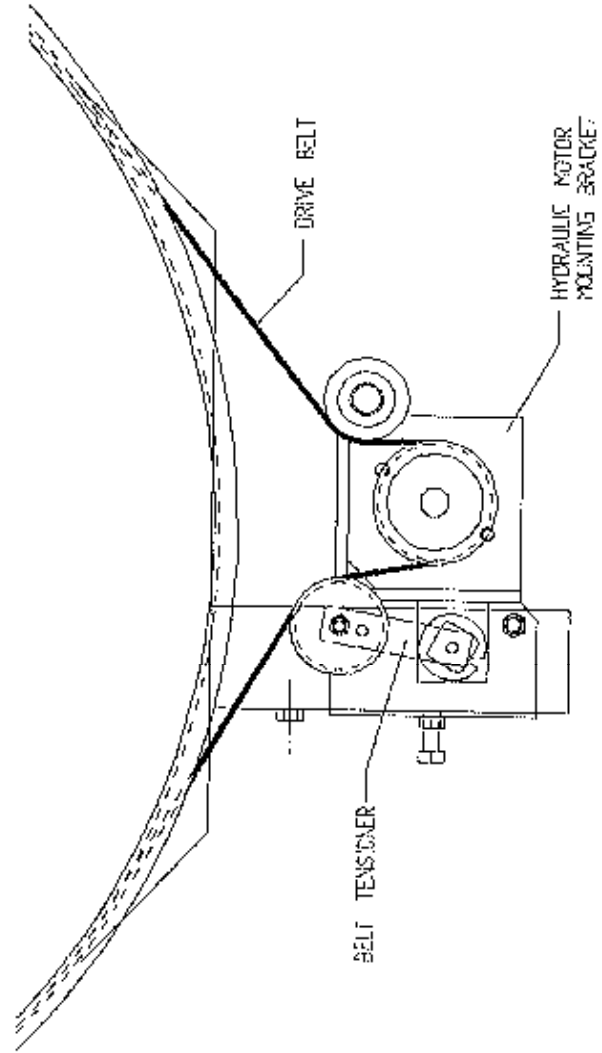
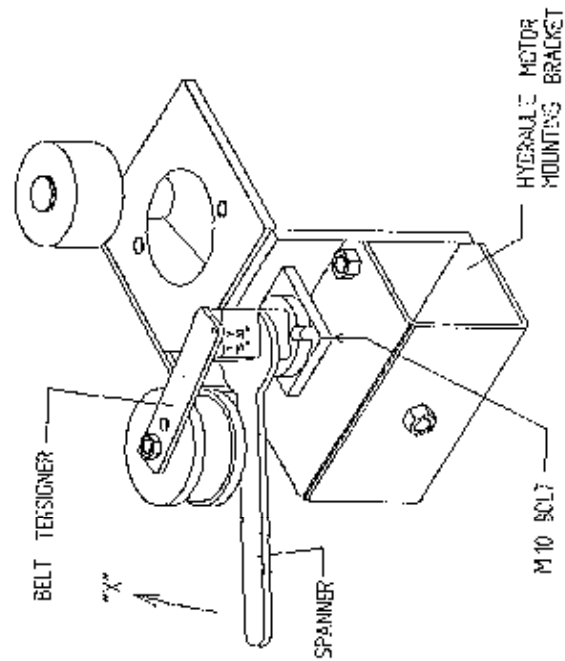
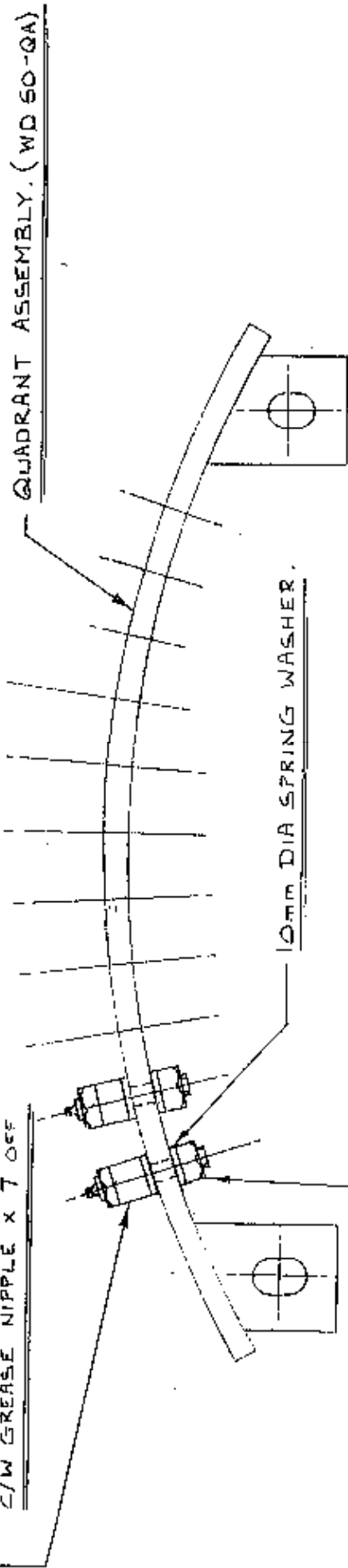


Fig. 3

NOTE:

WHEN FITTING 3/4" DIA CAM FOLLOWERS TO QUADRANT ASSEMBLY IT IS NECESSARY TO TORQUE NUTS TO 26 FT/LB.

3/4" DIA CAM FOLLOWER (HEAVY DUTY)
C/W GREASE NIPPLE X 7 OFF



3/8" U.N.F. LOCKNUT (BINX)

10mm DIA SPRING WASHER.

PLAN VIEW OF QUADRANT ASSEMBLY.

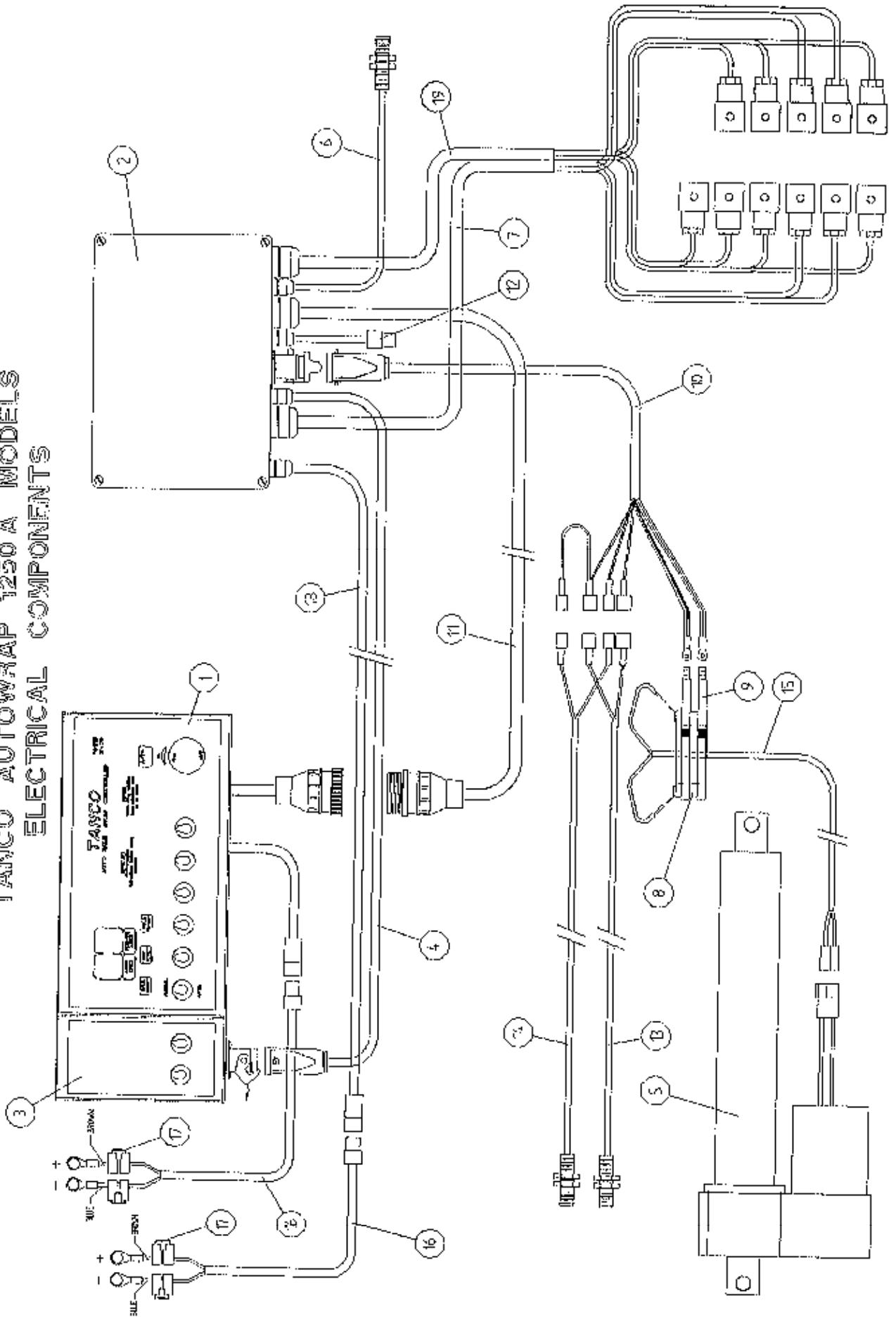
NOTE:

ENSURE THAT M20 HEX HD BOLT X 110mm LONG USED TO MOUNT 4" DIA SUPPORT WHEELS ON TURNABLE ASSEMBLY IS POSITIONED WITH BOLT HEAD TO INSIDE TO AVOID FOULING 3/4" DIA CAM FOLLOWER.

TANCO AUTOWRAP (1994 MODEL)

QUADRANT ASSEMBLY INSTRUCTIONS.

TANCO AUTOWRAP 1250 A MODELS
ELECTRICAL COMPONENTS

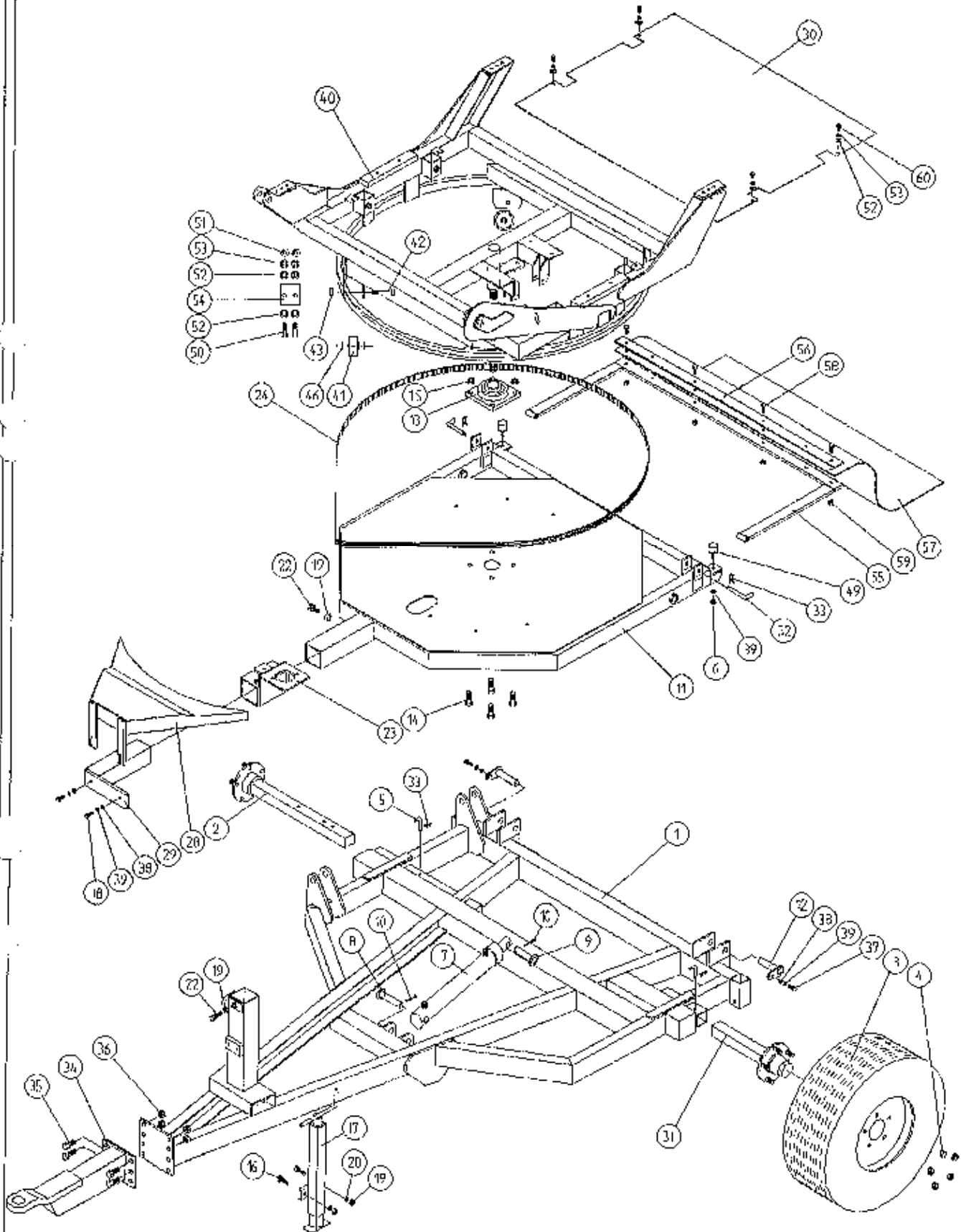


FILE NAME 9227 F

TANCO AUTOWRAP 1250A MODELELECTRICAL COMPONENTSPARTS LIST

ITEM NO	DESCRIPTION	QTY	PART-NO.
1.	CONTROL BOX	1	D606
2.	JUNCTION BOX (5 BANK VALVE)	1	ZDG-JB5
3.	ADDITIONAL CONTROL BOX FOR 1250A MODEL	1	ZDG-RCB
4.	LEAD FOR ADDITIONAL CONTROL BOX C/W HEARTING PLUG.	1	ZDG-CB
5.	WARNER LINEAR ACTUATOR	1	ZD605-510
6.	LIFT ARM SENSOR	1	ZD606-LAS
7.	ADDITIONAL LOOM FOR VALVE C/W HIRCHMANN FOR 1250A	1	ZD606-010
8.	SLIP RING ASSY	1	ZD605-308
9.	BRUSHES	1	ZD606-302
10.	7 CORE CABLE C/W HEARTING PLUG	1	D605-7C
11.	24 CORE INTER CONNECTING LEAD C/W CONNECTORS	1	D605-24C
12.	SYSTEM PRESSURE LEAD	1	ZD605-070
13.	ROTATING SENSOR	1	ZD606-RS
14.	TIP SENSOR	1	ZD606-TS
15.	TWO CORE CABLE FOR SLIP RING	1	D605-02C
16.	MAIN BATTERY LEAD	2	ZD606-030
17.	IN-LINE FUSE	4	ZD606-100
18.	MAIN LEAD FOR JUNCTION BOX	1	ZD606-050
19.	LOOM FOR VALVE C/W HIRSCHMAN	1	ZD606-081

TANCO AUTOWRAP 1250A MODELS MAIN ASSEMBLY



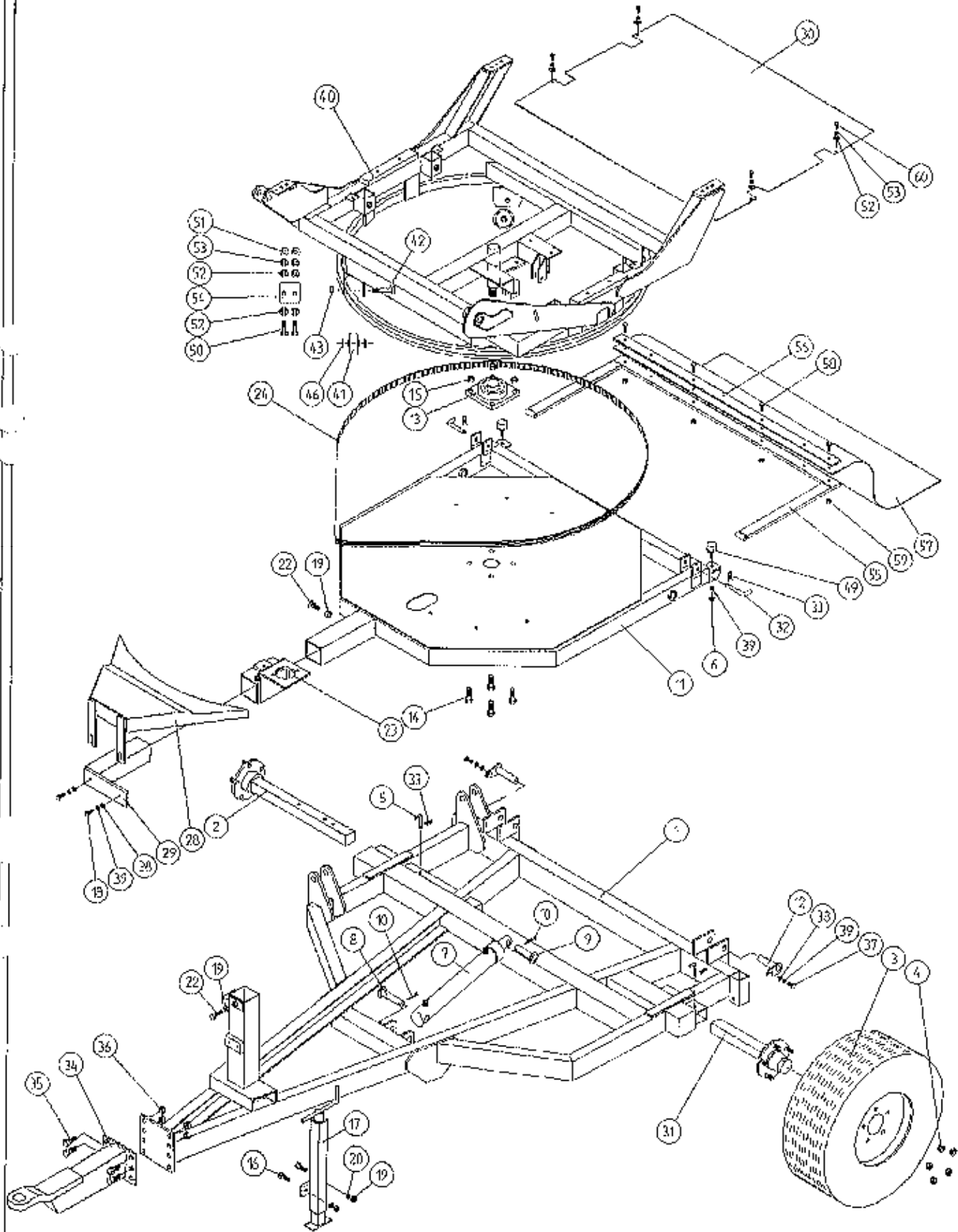
WD010 - PL5

**TANCO AUTOWRAP 1250 A MODEL
MAIN ASSEMBLY
PARTS LIST**

WD610-PL5

ITEM NO	DESCRIPTION	QTY	PART-NO.
1.	CHASSIS ASSY	1	WD60-CHA
2.	STUB AXLE (LONG)	1	Z04-033
3.	WHEELS	2	Z04-03
4.	WHEEL NUTS	10	M22AWNA
5.	BISSEL PIN	1	Z03-22-AW82
6.	M10 HEX NUT	2	Z18-10
7.	HYD. RAM	1	Z01-01-AR687
8.	RAM BOTTOM PIVOT PIN	1	Z03-02-330
9.	RAM TOP PIVOT PIN	1	Z03-03-50
10.	2" X 1/4" SPLIT PIN	2	Z02-21-29
11.	TIPPING FRAME ASSY	1	WD60-TF
12.	TIPPING FRAME PIVOT PIN C/W GREASE NIPPLE	2	Z03-01-905
13.	2" DIA FLANGE BEARING	1	Z06-49EC
14.	5/8" UNF HEX HD SET X 2" DIA	4	Z30B-064
15.	5/8" UNF LOCKNUT	4	Z20-10
16.	M12 HEX HD SET X 40MM LONG	2	Z26-084S
17.	SCREW JACK ASSY	1	WD60-JA
18.	M10 HEX HD ST X 30MM LONG	2	Z26-023
19.	M12 HEX NUT	5	Z18-12
20.	12MM DIA SPRING WASHER	2	Z12-02-12
22.	M12 HEX HD SET X 30MM LONG	2	Z26-082S
23.	HYD MOTOR MOUNTING ASSY	1	WD60-HMB
24.	170" LONG X 1/2" PITCH X 1" WIDE TOOTHED BELT	1	Z05-02-AW2
28.	HYD MOTOR GUARD ASSY	1	WD60-HMG
29.	HYD MOTOR GUARD MOUNTING BRACKET	1	WD60-HAMB
30.	TURN TABLE COVER PLATE	1	WD612-022
31.	STUB AXLE (SHORT)	1	Z04-032
32.	BISSEL PIN	2	Z03-22-AW100
33.	4MM "R" CLIP	4	Z36-02
34.	HITCH ASSY	1	WD65-HIT
35.	M16 HEX HD SET X 45MM LONG	4	Z26-123S
36.	M16 LOCKNUTS	4	Z23-16
37.	M10 HEX HD SET X 25MM LONG (TUFLOCK)	2	Z26-061S
38.	10MM DIA MACHINES FLAT WASHER	4	Z11-02-10
39.	10MM DIA SPRING WASHER	5	Z12-02-10
40.	TURNTABLE ASSY	1	WD610-TA
41.	SUPPORT WHEELS(4" DIA)	4	Z06-466
42.	AXLE ASSY C/W GREASE NIPPLE	4	Z03-22-AW/AX Z39-60
43.	M20 LOCKNUTS	4	Z23-20
46.	SPACER	8	Z18-12
49.	BUFFER 50MM LONG DIA X 40MM LONG	2	Z40-20
50.	M8 HEX HD SET X 20MM LONG	4	Z26-039S
51.	M8 HEX NUT	4	Z18-08
52.	8MM DIA FLAT WASHER (MUD FLAT)	8	Z11-02-08
53.	8MM DIA SPRING WASHER	8	Z12-02-08
54.	SCRAPER	2	WD60-705
55.	RUBBER MAT MOUNTING ASSY	1	WD63-MMF
56.	CLAMPING PLATE	1	WD63-1300

TANCO AUTOWRAP 1250A MODELS MAIN ASSEMBLY



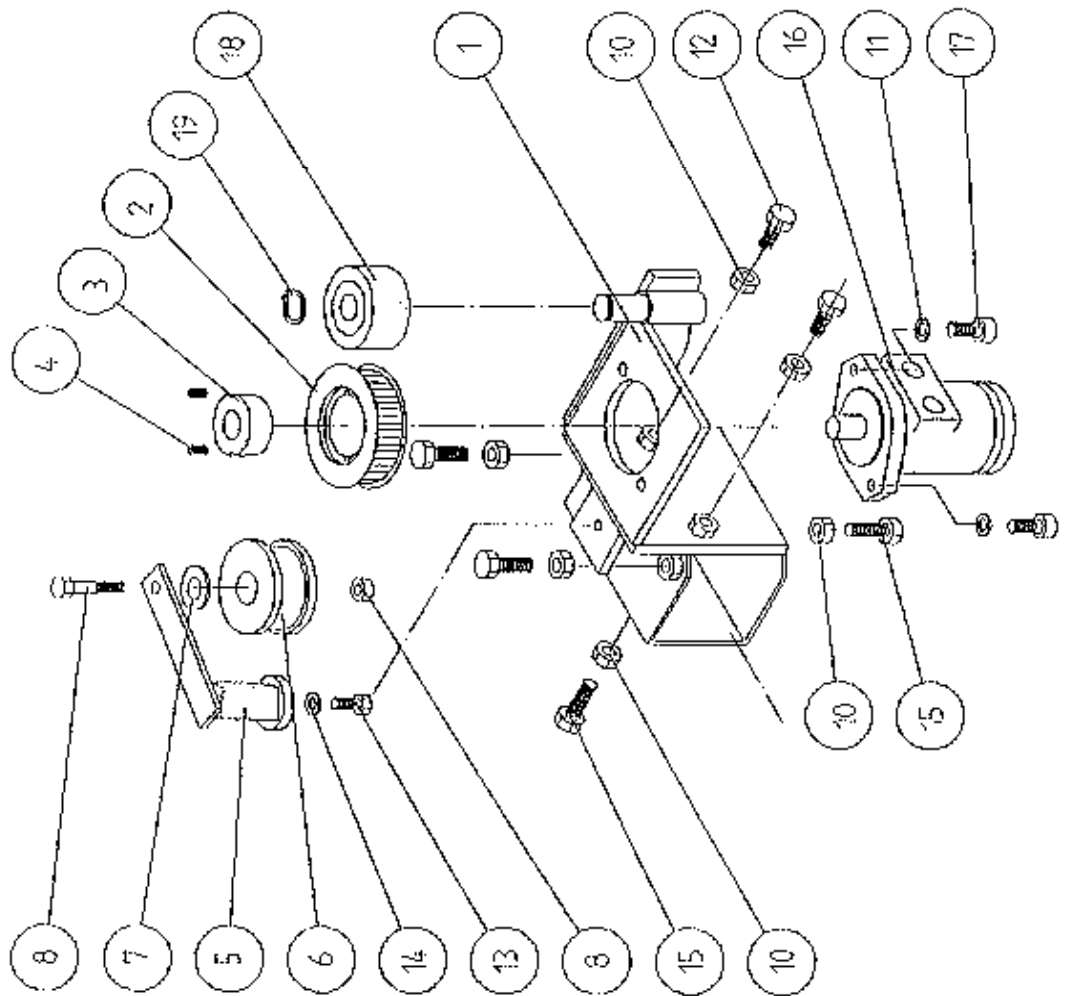
WD010-PL5

TANCO AUTOWRAP 1250A MODEL
MAIN ASSEMBLY

PARTS LIST

ITEM NO	DESCRIPTION	QTY	PART-NO
57.	BALE MAT	1	Z05-02AW
58.	M8 HEX HD BOLT X 50MM LONG	4	Z26-045B
59.	M8 LOCKNUTS	4	Z23-08
60.	M8 CHEESE HD ST X 20MM LONG	4	Z13-19-08-20

TANCO AUTOWRAP 1994 MODEL
HYDRAULIC MOTOR DRIVE ASSEMBLY



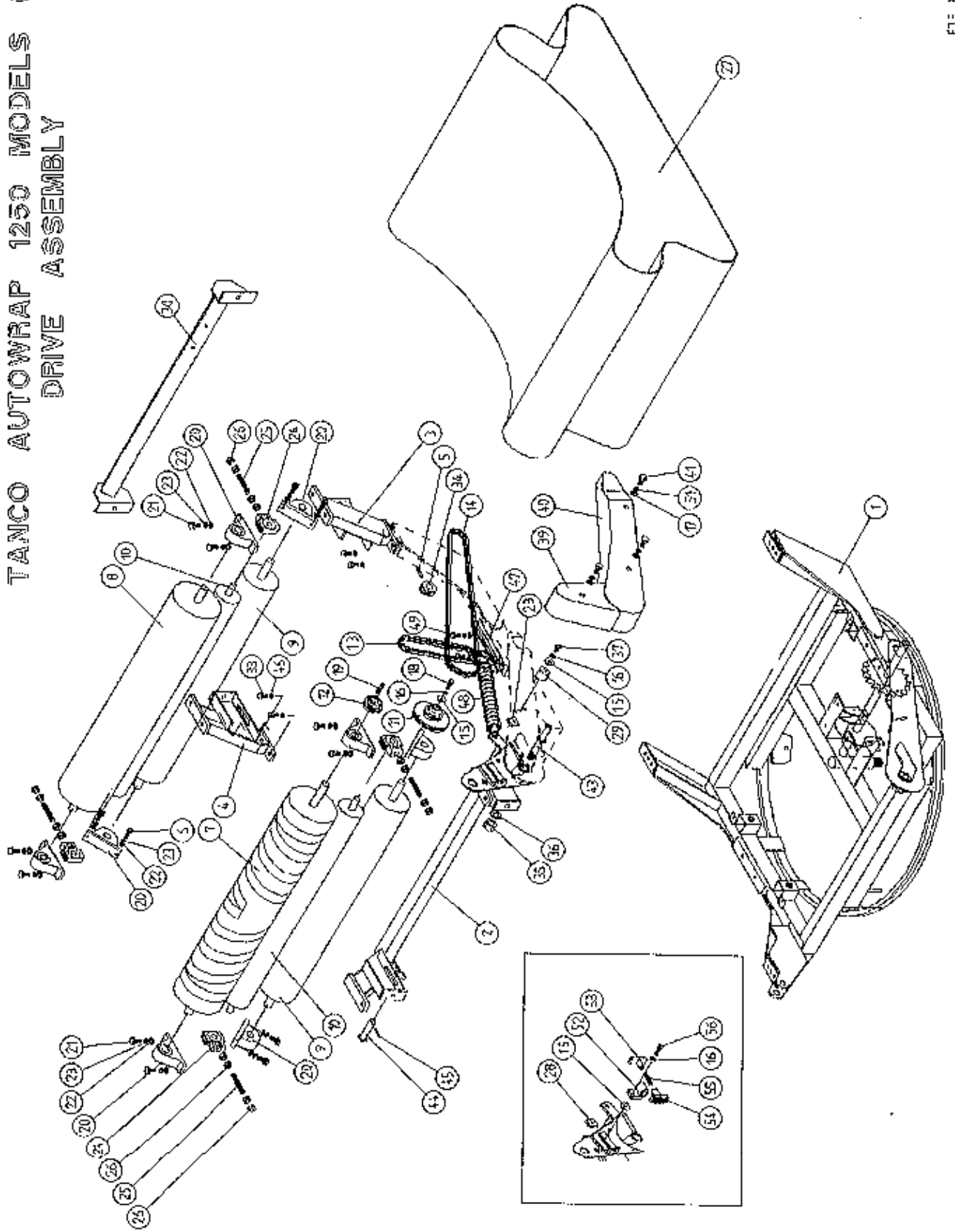
WD60-PL27

TANCO AUTOWRAP 1994 MODEL
HYDRAULIC MOTOR DRIVE ASSEMBLY

PARTS LIST

ITEM NO.	DESCRIPTION	QTY.	PART-NO.
1.	HYDRAULIC MOTOR MOUNTING ASSY.	1	WD65-HMB
2.	4" DIA X 1/2" PITCH TOOTHED PULLY	1	Z09-005-AW1
3.	TAPER LOCK BUSH TO SUIT 1" DIA SHAFT	1	Z09-005-AW2
4.	M10 STUDS X 15MM	2	Z28-01
5.	ROSTA TENSIONING UNIT ARM	1	Z06-454
6.	STEPPED ROLLER C/W BEARINGS	1	Z06-456
7.	SPACER	1	WD60-798
8.	M10 HEX HD BOLT X 60MM LONG	1	Z26-067B
9.	M10 LOCKNUT	1	Z23-10
10.	M12 HEX NUT	6	Z18-12
11.	12MM DIA SPRING WASHER	2	Z12-02-12
12.	M12 HEX HD SET X 30MM LONG	2	Z26-082S
13.	M10 HEX HD SET X 25MM LONG (TUFLOCK)	1	Z26-061S
14.	10MM DIA SPRING WASHER	1	Z12-02-10
15.	M12 HEX HD SET X 40MM LONG	6	Z26-084S
16.	HYDRAULIC MOTOR C.L.	1	Z01-02-AR75
17.	M12 SOCKET HD SCREW X 30MM LONG	2	Z13-6-12X30
18.	ROLLER C/W BEARINGS	1	Z06-457
19.	CIRCLIP	1	Z28-525

TANCO AUTOWRAP 1250 MODELS (1994)
DRIVE ASSEMBLY

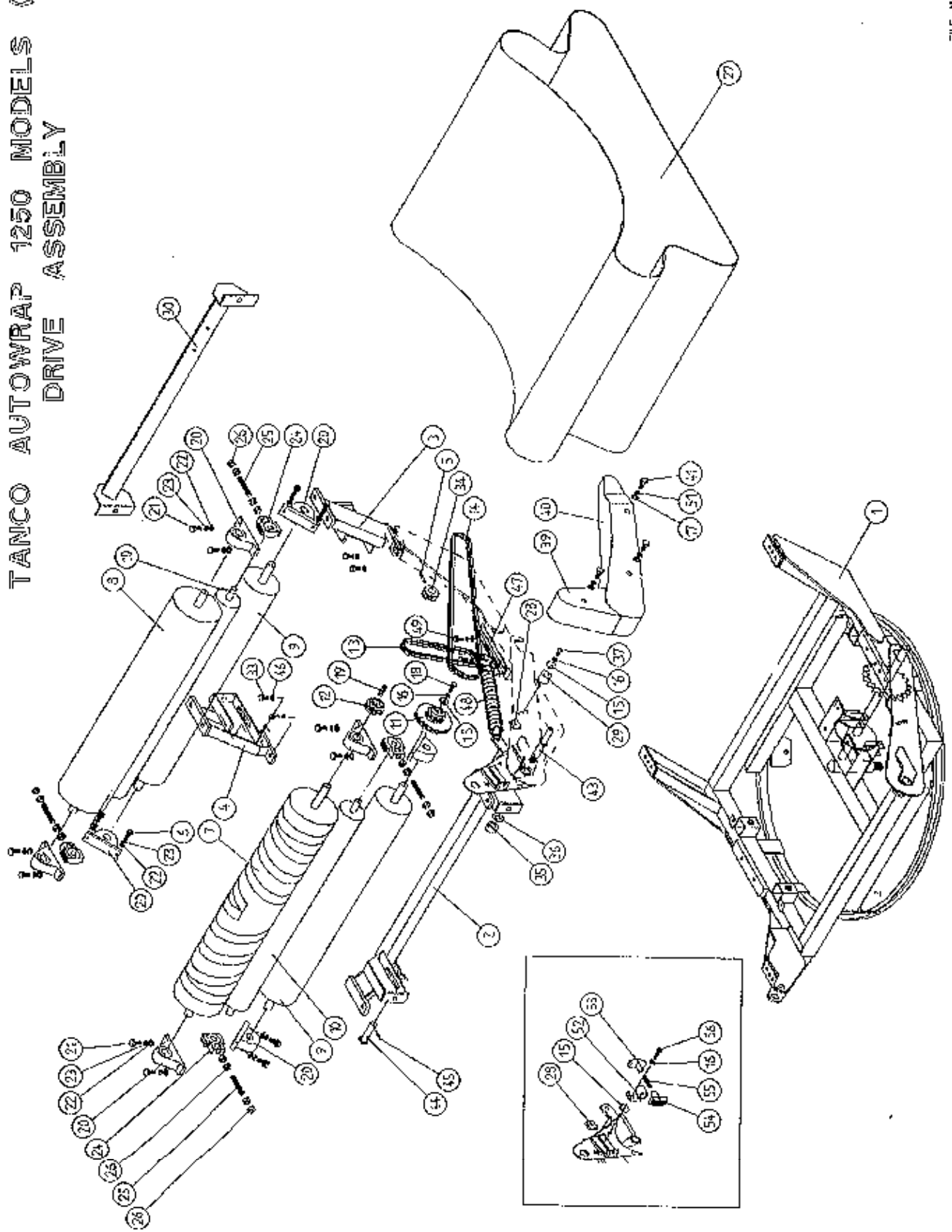


**TANCO AUTOWRAP 1250 MODEL 1994
DRIVE ASSEMBLY**

PARTS LIST

ITEM NO	DESCRIPTION	QTY	PART-NO
1.	TURNTABLE ASSY	1	WD610-TA
2.	ROLLER MOUNTING BRACKET (SWIVEL)	1	WD612-RMS
3.	ROLLER MOUNTING BRACKET (FIXED)	1	WD612-RM1
4.	ROLLER MOUNTING BRACKET (FIXED)	1	WD612-RM2
5.	5/16" DIA X 45MM LONG TENSION PIN	1	Z03-20-022
6.	M14 HEX HD SET X 50MM LONG	8	Z26-104S
7.	BIG ROLLER ASSY (DRIVE)	1	WD610-DRA
8.	BIG ROLLER ASSY (IDLER)	1	WD610-BRI
9.	ROLLER ASSY (IDLER)	2	WD65-BRI
10.	TRACKING ROLLER ASSY (LONG)	2	WD610-TRL
11.	38 TOOTH X 19 TOOTH X 1/2" PITCH DOUBLE DUPLES SPROCKET TO SUIT 08B-2 CHAIN	1	Z06-D610-1938
12.	19 TOOTH X 1/2" PITCH DUPLEX SPROCKET TO SUIT 08B-2 CHAIN	1	Z06-D610-19
13.	CHAIN 08B-2 1/2" PITCH DUPLEX X 63 PITCHES INCL. JOINER	1	Z09-AW-10
14.	CHAIN 08B-2 1/2" PITCH DUPLEX X 156 PITCHES INCL. JOINER	1	Z09-AW-20
15.	RETAINING COLLAR	2	WD623-071
16.	10MM DIA SPRING WASHER	3	Z12-02-10
17.	10MM DIA FLAT WASHER	5	Z10-02-10
18.	M10 HEX HD SET X 30MM LONG	1	Z26-062S
19.	5/16" KEY STEEL X 32MM LONG	1	WD623-K32
20.	1 1/4" PILLOW BLOCK BEARING	8	Z06-485
21.	M14 HEX HD SET X 45MM LONG	8	Z26-103S
22.	14MM DIA FLAT WASHER	24	Z11-02-14
23.	14MM DI SPRING WASHER	24	Z12-02-14
24.	SLIDING BEARING STL	4	Z06-47ST
25.	M20 THREADED BAR X 135MM LONG	4	WD65-20TB
26.	M20 HEX NUTS	16	Z18-20
27.	BALE BELT 1000MM X 5150MM LONG	1	Z05-02AWV2-93
28.	LOCKING PLATE	1	WD623-060
29.	CHAIN TENSIONER ROLLER	1	WD60-CT
30.	CUT AND START MOUNTING FRAME	1	WD612-CSM
31.	LOCKING PLATE	2	WD623-060
32.	M14 HEX NUTS	8	Z18-14
33.	M12 HEX HD SET X 25MM LONG	4	Z26-081S
34.	15 TOOTH X 1.2" PITCH DUPLEX SPROCKET	1	Z06-AW125
35.	1" DIA UNC LOCKNUT	1	Z23-251
36.	1" H/D FLAT WASHER	2	Z10-02-25
37.	M10 HEX HD BOLT X 60MM LONG	1	Z26-066B
38.	M10 HEX HD BOLT X 80MM LONG	1	Z26-0692
39.	CHAIN GUARD (SMALL)	1	WD612-CGS
40.	CHAIN GUARD (LARGE)	1	WD612-CGL
41.	M10 HEX HD SET X 20MM LONG (TUFLOCK)	3	Z26-060ST
42.	STAR WASHER 1/2" DIA	3	Z10-02-121
43.	SPROCKET/BRACKET PIVOT SHAFT	1	WD610-71
44.	SWIVEL BRACKET PIVOT PIN J-50	1	Z03-03-50

TANCO AUTOWRAP 1250 MODELS (1994)
DRIVE ASSEMBLY

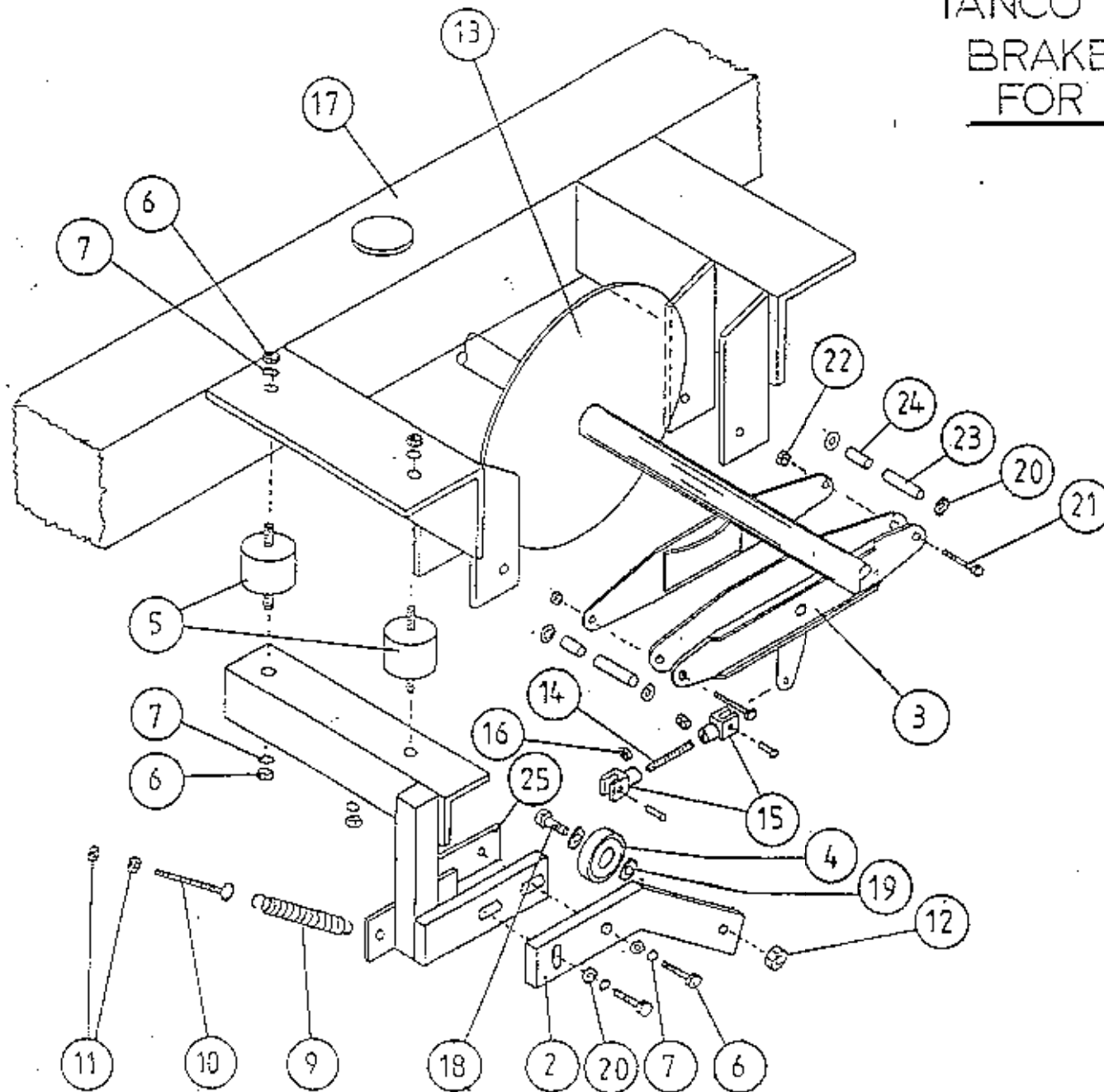


TANCO AUTOWRAP 1250 MODEL 1994
DRIVE ASSEMBLY

PARTS LIST

ITEM NO	DESCRIPTION	QTY	PART-NO.
45.	2" X 1/4" SPLIT PIN	1	Z03-21-29
46.	12MM DIA SPRING WASHER	4	Z12-02-12
47.	SPRING ANCHOR BRACKET	1	WD612-SAB
48.	ROLLER MOUNTING SWIVEL TENSION SPRING	1	Z07-21
49.	M12 HEX HD SETS X 30MM LONG	2	Z26-082S
50.	12MM DIA FLAT WASHER	2	Z10-02-12
51.	1/2" DIA STAR WASHER	3	Z11-02-10
52.	CHAIN TENSIONER BODY	1	WD610-CTB
53.	CHAIN TENSIONER BLOCK ASSY INNER	1	WD610-TB1
54.	CHAIN TENSIONER BLOCK ASSY OUTER	1	WD610-TB0
55.	SPRING 14.5MM O.D. X 1.6MM WIRE X 60MM LONG	1	Z07-48
56.	M10 HEX HD SET X 40MM LONG	1	Z26-064S

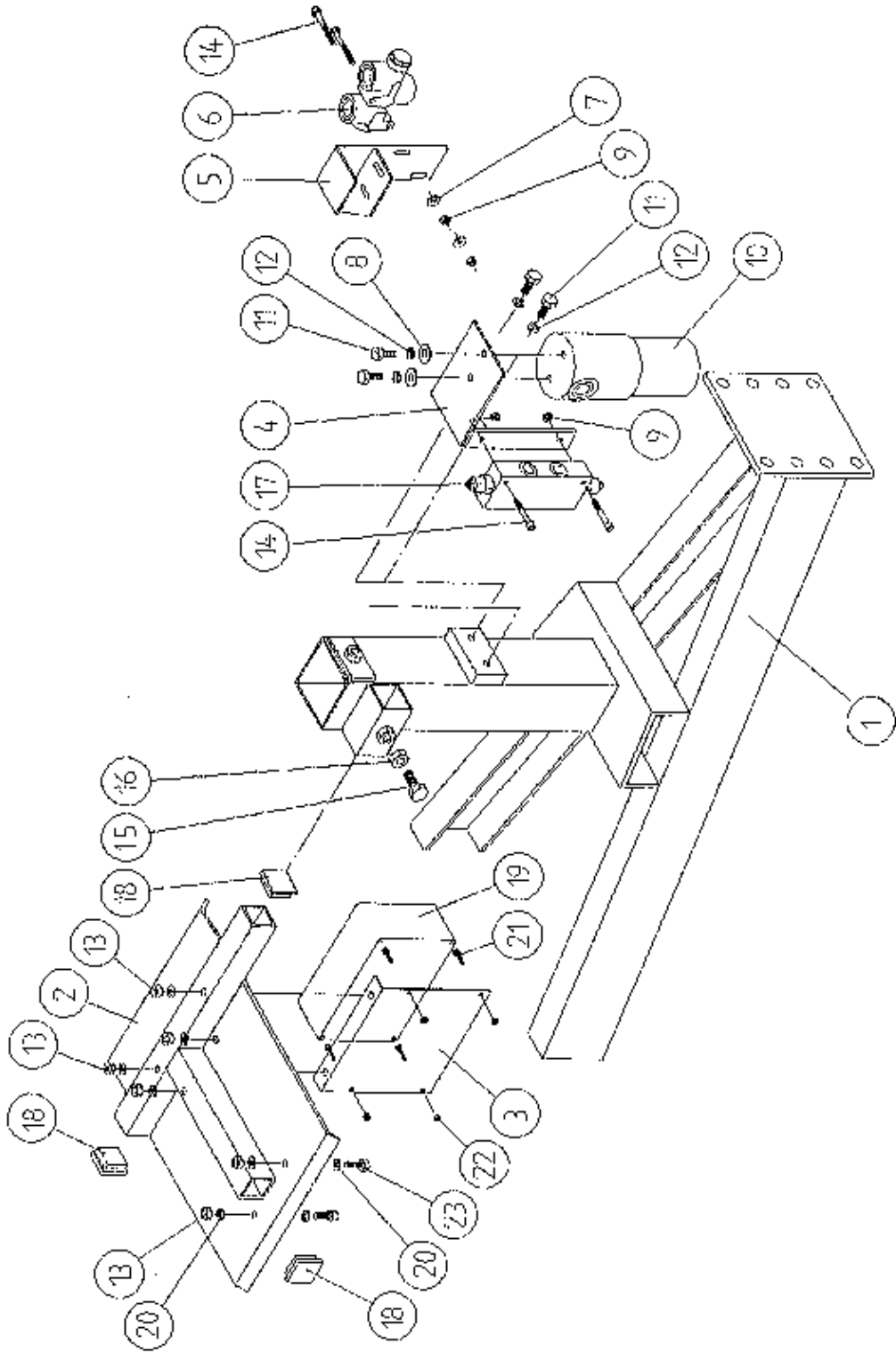
TANCO AUTOWRAP 1994
BRAKE ARRANGEMENT
FOR INDEXING SHAFT



**TANCO AUTOWRAP 1994
BRAKE ARRANGEMENT FOR INDEXING SHAFT
PARTS LIST**

ITEM NO	DESCRIPTION	QTY	PART-NO
1.	CAM FOLLOWER MOUNTING BRACKET (UPPER)	1	WD60-CFMB
2.	CAM FOLLOWER MOUNTING BRACKET (LOWER)	1	WD60-804
3.	CALIPER DISC BRAKE UNIT	1	Z49-92
4.	BALL BEARING (6301)	1	Z49-92
5.	RUBBER BUFFER 50MM DIA X 30 LONG TYPE A	2	Z40-21
6.	M10 HEX NUTS	4	Z18-10
7.	10MM DIA SPRING WASHERS	6	Z12-02-10
8.	M10 HEX HD SET X 40 LONG	2	Z26-064S
9.	TENSION SPRING	1	Z07-05
10.	EYE BOLT (M8)	1	WD60-EB
11.	M8 HEX NUTS	2	Z18-08
12.	M12 LOCKNUT	1	Z23-12
13.	SPROCKET/SHAFT ASSY	1	WD65-SPR
14.	5/16" UNF THREADED BAR X 90MM LONG	1	WD60-806
15.	5/16" UNF CLEVIS C/W PIN & CLIP	2	Z49-33
16.	5/16" UNF HEX NUT	2	Z15-05
17.	TURN TABLE	1	WD60-TA
18.	M12 HEX HD SETS X 40MM LONG	1	Z26-084S
19.	12MM DIA FLAT WASHER	2	Z11-02-12
20.	10MM DIA FLAT WASHER	7	Z11-02-10
21.	3/8" UNF HEX HD SET X 3" LONG	2	Z31B-102
22.	3/8" UN FLOCK NUT	2	Z15-06
23.	SPACER 1/2" O.D. X 13/32 I.D. X 1 1/2" LONG	2	Z49-92-01
24.	SPACER 1/2" O.D. X 13/32" I.D. X 1/2" LONG	2	Z49-92-02
25.	CLAMPING PLATE		WD60-836

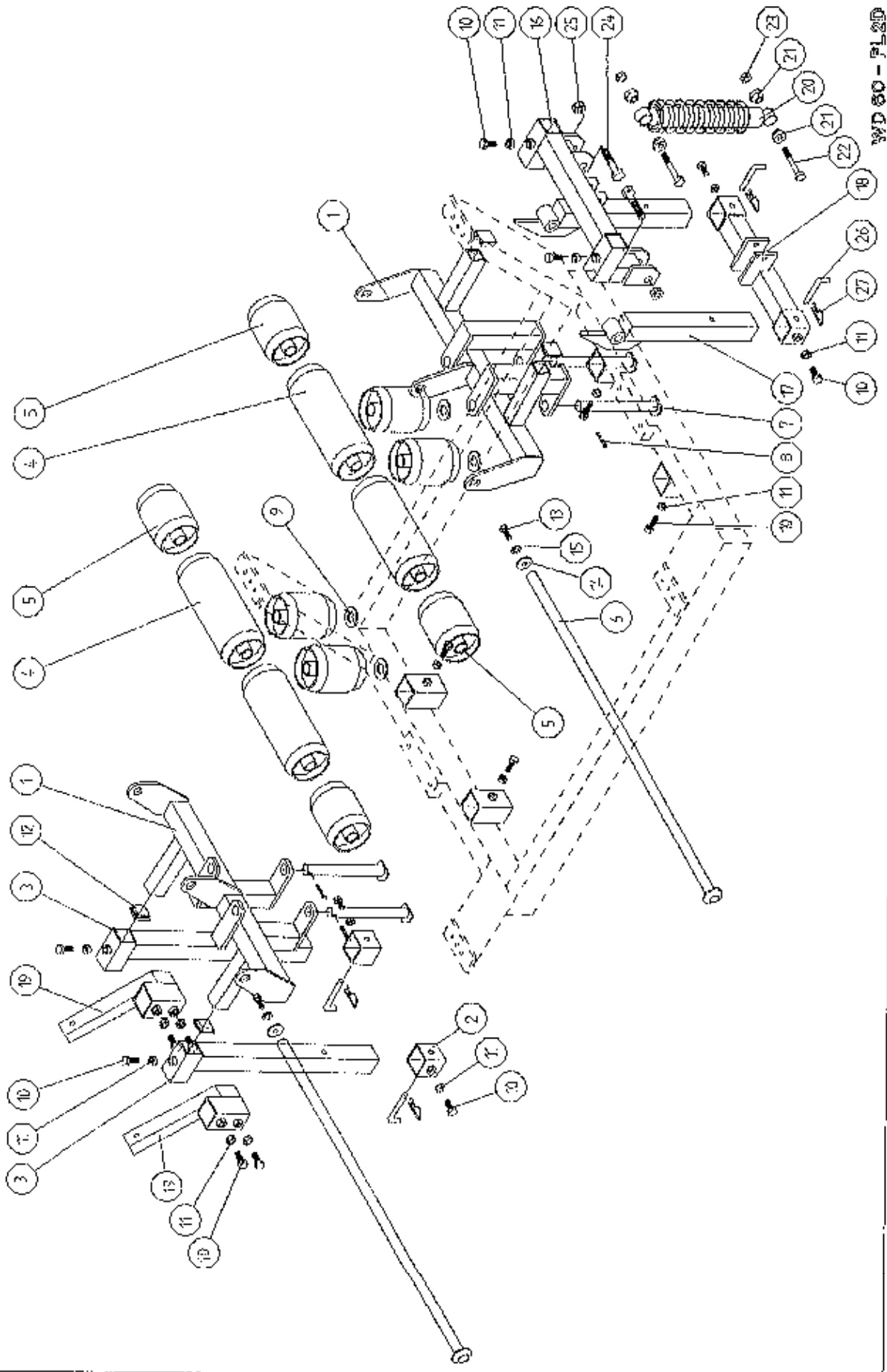
TANCO AUTOWRAP 1250 A MODEL (1994)
 VALVE/JUNCTION BOX / FILTER & DIVERTER VALVE MOUNTING BRACKETS ASSY



TANCO AUTOWRAP 1250A MODEL (1994)VALVE/JUNCTION BOX/FILTER & DIVERTER VALVE MOUNTING
BRACKET ASSEMBLY
PARTS LIST

ITEM NO	DESCRIPTION	QTY	PART-NO.
1.	CHASSIS ASSY	1	
2.	5 BANK VALVE MOUNTING BRACKET ASSY	1	WD612-VMP
3.	JUNCTION BOX MOUNTING PLATE	1	WD612-04
4.	OIL FILTER/OVER-CENTRE-VALVE MOUNTING BRACKET	1	WD610-FVB
5.	FLOW DIVIDER MOUNTING BRACKET	1	WD65-FDM
6.	FLOW DIVIDER	1	Z01-03-10-A6
7.	6MM DIA MUD FLAP WASHER	2	Z11-02-061
8.	8MM DIA MUD FLAP WASEHR	2	Z11-02-081
9.	M6 LOCKNUT (NYLOCK)	4	Z23-06
10.	OIL FILTER	1	Z01-24-08
11.	M8 HEX HD SET x 25mm	4	Z26-040S
12.	8mm DIA SPRING WASHER	4	Z12-02-08
13.	M8 LOCKNUTS	6	Z23-08
14.	M6 ALLEN HD SOCKET SCREW x 50mm	4	Z13-020-50
15.	M12 HEX HD SET x 30mm	1	Z26-082S
16.	M12 HEX NUT	1	Z18-12
17.	OVER-CENTRE VALVE	1	Z01-03-10-A8
18.	PLASTIC CAP TO SUIT 40 x 40 RHS	3	Z40-07
19.	JUNCTION BOX	1	ZDG-JB2
20.	8mm DIA FLAT WASHER	12	Z10-02-08
21.	M4 ALLEN HD SOCKET SCREW x 16mm	4	Z26-006
22.	M4 LOCKNUT	4	Z23-04
23.	M8 HEX HD SET x 20mm	6	Z26-039S

TANCO AUTOWRAP 1250 MOD.H. (1994)
 END ROLLER MOUNTING BRACKET ASSEMBLY



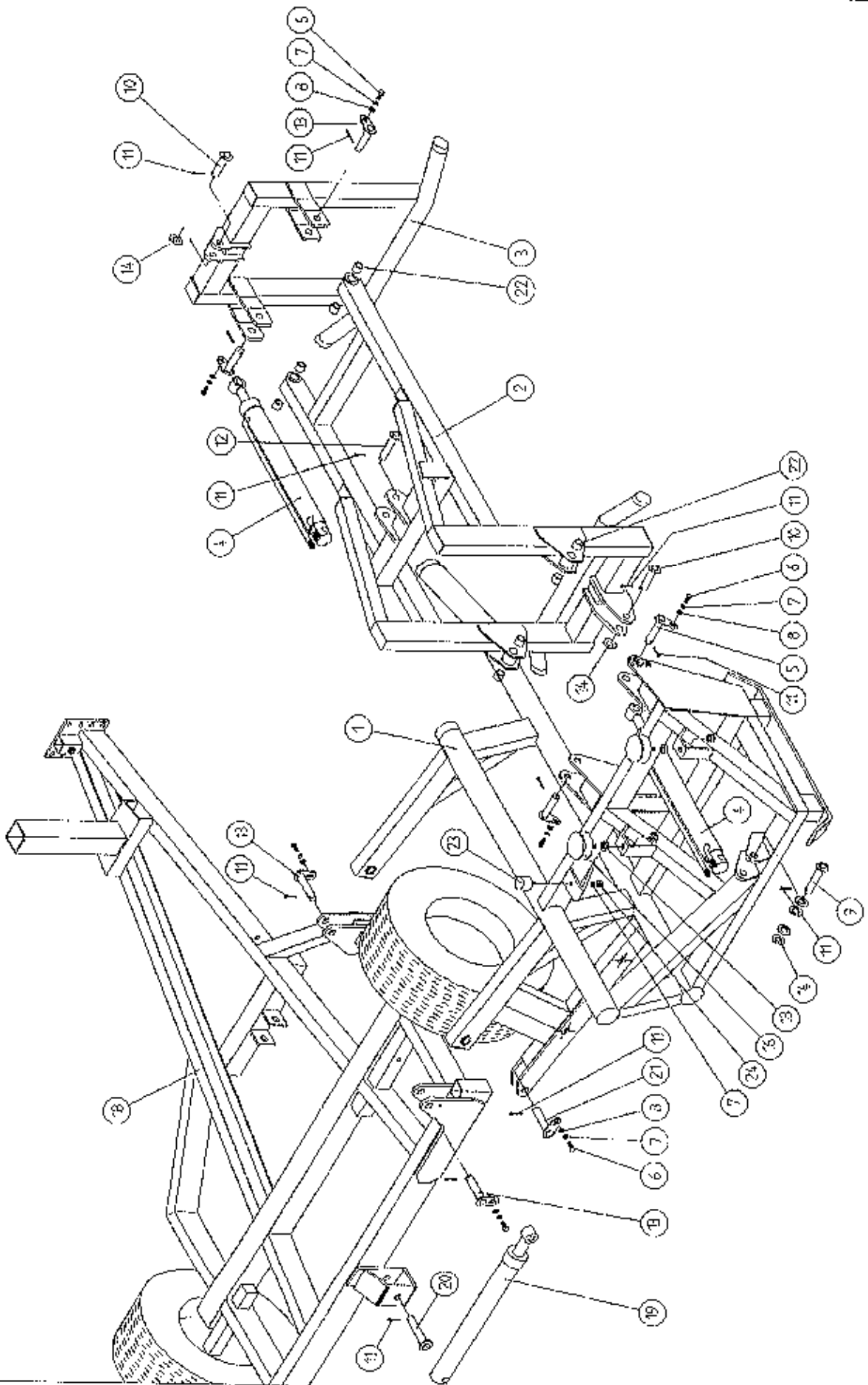
WD 80 - PL 2D

TANCO AUTOWRAP 1250 MODEL 1994
 END ROLLER MOUNTING BRACKET ASSY

WD60-PL20

ITEM NO	DESCRIPTION	QTY	PART-NO.
1.	ROLLER MOUNTING BRACKET	2	WD625-ERM1
2.	SOCKET ASSY LOWER	2	WD625-SA
3.	SOCKET ASSY UPPER	2	WD625-ERSA
4.	ROLLER ASSY (LONG)	4	WD625-LRA
5.	ROLLER ASSY (SHORT)	8	WD625-ERA5
6.	ROLLER PIVOT PIN (LONG)	2	D625-PL
7.	ROLLER PIVOT PIN (SHORT)	4	WD625-ERPS
8.	1/4" DIA SPLIT PIN X 1 1/2" LONG	4	Z03-21-27
9.	1" HEAVY DUTY FLAT WASHER	4	Z10-02-25
10.	M12 HEX H SET X 40MM LONG	16	Z26-084S
11.	M12 HEX NUT	16	Z18-12
12.	PLASTIC CAP	4	Z32-07
13.	M10 HEX D ST X 25MM LONG (TUFLOCK)	2	Z26-016S
14.	THRUST WASHER	2	WD623-071
15.	10MM DIA SPRING WASHER	2	Z12-02-10
16.	PIVOT BRACKET UPPER	1	WD625-PBU
17.	PIVOT BRACKET LOWER	1	WD625-PBL
18.	DAMPER BRACKET LOWER	1	WD625-DBL
19.	CUT AND START MOUNTING BRACKET	2	WD625-CSM
20.	DAMPER SPRING	1	Z07-60
21.	SPACER	4	WD612-038
22.	M16 HEX HD BOLT X 80MM LONG	2	Z26-130B
23.	M16 LOCKNUT	2	Z23-16
24.	3/4" UNC HEX HD BOLT X 100MM	2	Z27-134B
25.	3/4" UNC HEX LOCKNUT	2	Z23-201
26.	BISSEL PIN	2	Z03-22-AW82
27.	4MM "R" CLIP	2	Z36-0221

TANCO AUTOWRAP 1250S/1250A MODEL
LIFT ARM ASSEMBLY



WD 60 - FL 1

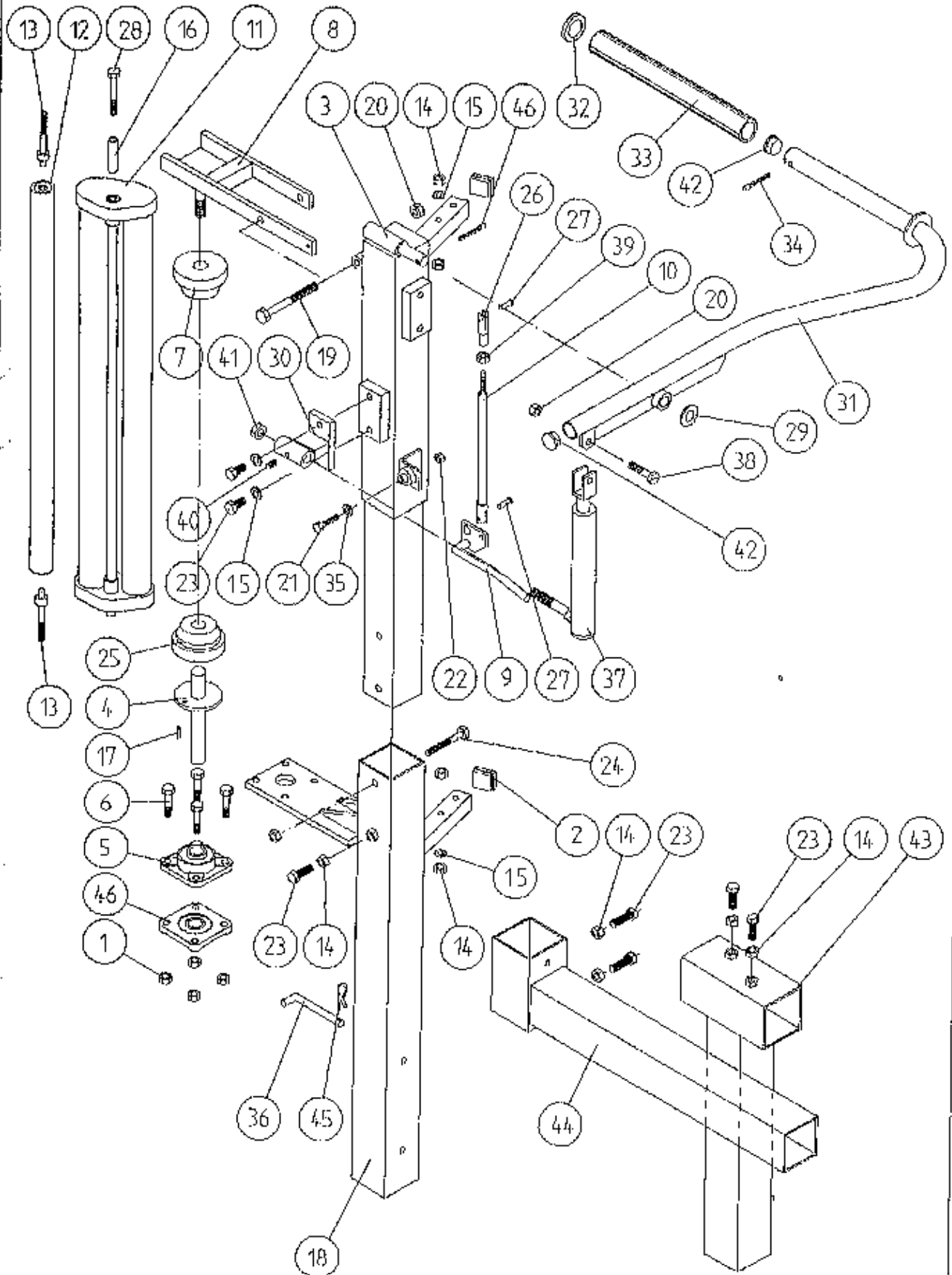
WD60-PL1

TANCO AUTOWRAP 1250S/1250A MODEL 1994
LIFT ARM ASSEMBLY

PARTS LIST

ITEM NO	DESCRIPTION	QTY	PART-NO.
1.	LIFT ARM ASSY	1	WD625-LA
2.	LIFT ARM - GRAB FRAME	1	WD625-LAGF
3.	LIFT ARM - GRAB SECTION	1	WD625-LAGS
4.	HYDRAULIC RAM D/A	1	Z01-01-140
5.	GRAB FRAME PIVOT PIN C/W GREASE NIPPLE	2	Z03-01-796
6.	M10 HEX HD SET x 25mm LONG	7	Z26-061S
7.	10mm DIA SPRING WASHER	8	Z12-02-10
8.	10mm DIA FLAT WASHER	7	Z11-02-10
9.	MAIN FRAME BOTTOM RAM PIVOT PIN	1	Z03-02-54
10.	MAIN FRAME AND GRAB TOP RAM PIVOT PIN	2	Z03-03-50
11.	1/4" DIA SPLIT PIN x 1 1/2" LONG	11	Z03-21-27
12.	GRAB BOTTOM RAM PIVOT PIN	1	Z03-0-218
13.	GRAB PIVOT & LIFT ARM PIVOT PIN C/W GREASE NIPPLE	4	Z03-01-905
14.	1" DIA HEAVY FLAT WASHER	6	Z10-02-25
15.	HYDRULIC RAM D/A	1	Z01-01-140S
16.	RUBBER BUFFER 100mm DIA x 40mm LONG	2	Z40-26
17.	M16 HEX NUT	4	Z18-16
18.	CHASSIS ASSY	1	WD60-CHA
19.	HYDRAULIC RAM (LIFT ARM)	1	Z01-01-AWQ12
20.	RAM BOTTOM PIVOT PIN	1	Z03-02-330
21.	RAM TOP PIVOT PIN	1	Z03-01-797
22.	TENSION BUSHES	8	Z03-20-015
23.	BUFFER 56mm DIA x 40mm LONG	1	Z40-20
24.	M10 HEX NUT	1	Z18-10

TANCO AUTOWRAP 1250A MODEL 1994
 FILM DISPENSOR SYSTEM



FILE NAME WD 625 - PI.9

**TANCO AUTOWRAP 1250A MODEL (TRAILED) 1994
FILM DISPENSING SYSTEM**

ITEM NO	DESCRIPTION	QTY	PART-NO
1.	M10 LOCKNUTS	4	Z23-10
2.	PLASTIC CAPS (TO SUIT 40 X 40 X 3 RHS)	2	Z32-07
3.	DISPENSER MOUNTING (UPPER)	1	WD60-DMUH
4.	FILM SPOOL ASSEMBLY	1	WD60-SPO
5.	1" DIA FLANGE BEARING C/W CAM LOCK	1	Z06-48EC
6.	M10 HEX HD BOLT X 50MM LONG	4	Z26-066B
7.	CONE (TOP) C/W BALL BEARINGS	1	Z06-45-01
8.	CLAMP ASSEMBLY	1	WD60-DMCA
9.	LEVER ASSEMBLY	1	WD60-DMLA
10.	LINK ASSEMBLY	1	WD60-DMLK
11.	FILM DISPENSER UNIT MK 8 (55% STRETCH)	1	D6151
12.	SLAVE ROLLER ASSY (PLASTIC COATED)	1	WD65-SLR
13.	SLAVE ROLLER PIVOT	2	WD60-253
14.	M12 HEX NUTS	9	Z18-12
15.	12MM DIA SPRING WASHER	2	Z12-02-12
16.	SLEEVE	1	D52012
17.	1/4" DIA TENSIN PIN X 3/4" LONG	1	Z03-20-062
18.	DISPENSER MOUNTING (LOWER)	1	WD60-DMLH
19.	M12 HEX HD BOLT X 130MM LONG	1	Z26-094B
20.	M12 LOCKNUT	3	Z23-12
21.	M8 HEX HD BOLT X 35MM LONG	1	Z26-042S
22.	M8 LOCKNUT	1	Z23-08
23.	M12 HEX HD SET X 30M LONG	3	Z26-082S
24.	M12 HEX HD BOLT X 100MM LONG	1	Z26-092B
25.	CONE (BOTTOM)	1	Z06-45-02
26.	CLEVIS (M10)	1	Z49-335
27.	PIN (5/16" DIA C/W CLIP)	2	Z49-337
28.	M10 HEX HD BOLT X 80MM LONG	1	Z26-0691B
29.	3/4" DIA FLAT WASHER	1	Z10-02-19
30.	FILM PULL DOWN BRACKET ASSY	1	WD65-FPDB
31.	FILM PULL DOWN ARM ASSY	1	WD65-FPDA
32.	RETAINING WASHER	1	WD60-859
33.	ROLLER	1	WD60-866
34.	2" X 1/4" SPLIT PIN	1	Z01-23-29
35.	4MM "R" CLIP	1	Z36-02
36.	BISSEL PIN (110MM LONG)	1	WD60-874
37.	HYDRAULIC RAM	1	Z01-01-AW25
38.	M12 HEX HD SET X 50MM LONG	1	Z26-086S
39.	5/16" UNF HEX NUT	1	Z15-05
40.	1/8" BSP ST GREASE NIPPLE	1	Z39-60
41.	M16 LOCKNUT	1	Z23-16
42.	1" GB PLASTIC CAP	2	Z32-14
43.	DISPENSER MAST HORIZONTAL SOCKET ASSY	1	WD65-DHS
44.	DISPENSER MAST VERTICAL SOCKET ASSY	1	WD65-DVS
45.	4MM "R" CLIPS	1	Z36-02
46.	1" DIA FLANGE BEARING	1	Z06-48

FAULT FINDING

PROBLEMS.

1. Drive Belt Slipping on Drive. Tension belt with Automatic tension set to 25 - 30 degrees - see page 8. Check belt is correct pitch if it has been replaced.

2. Drive belt breaking and bottom or Top Rim coming off motor sprocket. Check that cross line relief valve is working on motor. Check motor mount for alignment. Reduce tension on Drive Belt. Check there is no vertical movement of turntable spindle - if so tighten bearing locking screws on spindle and ensure that collar is secure on spindle below bearing.

3. Film Breaking Wash off dispenser and slave rollers. Change roll of film. Use recommended films only.

4. Film not wrapping evenly on bale. Adjust film mast so centre of film roll is aligned with centre of bale.

5. Film Dispenser not Pre-Stretching Film. Check that both Rollers turn when one is turned by hand. If not, fit new gears or replace unit.

6. Tyres coming off 4" platform Support Wheels. Replace Wheels - Reduce speed below 25 r.p.m. - Do not oil or grease path of wheels on platform.

FAULT FINDING

PROBLEMS

9. MAIN BELT MOVING SIDEWAYS

- (i) Ensure vertical rollers (plastic) are tight on the bale. Remember that the bale will reduce in size during wrapping and, on the round bales in particular, the corners will become rounded so that the bale will tend to move sideways due to centrifugal forces. Now, if the plastic rollers are too far apart, the bale will move against one of the plastic rollers whilst the belt will move in the opposite direction - so adjust the vertical plastic rollers so that they keep the bale central on the belt.
- (ii) Adjust bale stop on lift arm so that bale is loaded centrally onto platform.
- (iii) Check that both 6' rollers underneath the bale belt are running parallel to each other. Remember the golden rule - a belt will always move up a slope, so if the rollers are not parallel to each other then the belt will move to the widest setting.

NOTE:

It is important to adjust the idler roller only, as movement of the drive roller will entail adjusting the chain tension also. It is important to note if the belt moves to the same side all of the time, or if it moves first to the gearbox side and then to the other side. With the round bale wrapper, the belt will tend to move to the same side each time because the bale is always loaded the same way.

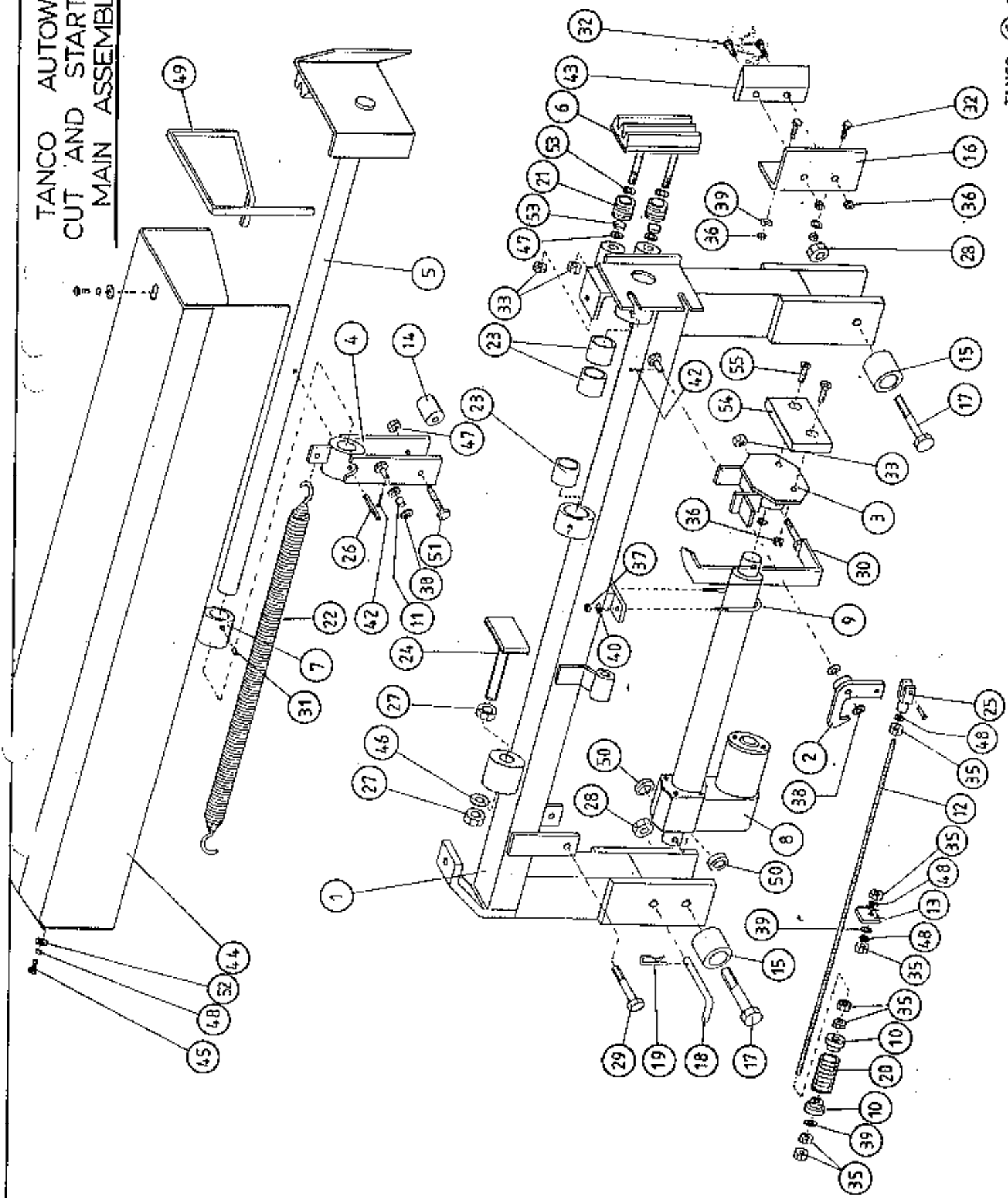
- (iv) Check that belt is the same measurement each side by running a string around the belt and measuring it. If one side is longer than the other replace the belt but if both sides are same measurement and all above adjustments fail, then try removing the belt and fitting it round the opposite way.

AUTOWRAP

**TANCO AUTOWRAP
CUT AND START UNIT (1994)
PARTS LIST**

ITEM NO	DESCRIPTION	QTY	PART-NO.
1.	MAIN MOUNTING FRAME ASSY	1	WD605-MF
2.	LATCH ASSY.	1	WD605-LA
3.	PUSH PLATE ASSY.	1	WD605-PP
4.	GUIDE ASSY	1	WD605-GD
5.	PLUNGER ASSY	1	WD605-PL
6.	FILM GRIPPER ASSY	1	WD605-FG
7.	PLUNGER END CAP	1	WD605-90
8.	WARNER LINEAR ACTUATOR D11 10B5 08	1	ZD605-510
9.	"U" BOLT	1	WD605-45
10.	STEPPED COLLAR	2	WD605-46
11.	SLEEVE 1/2" DIA O.D. X 13/32" DIA I.D.	1	WD605-47
12.	THREADED ROUND 5/16" UNF	1	WD605-48
13.	TRIGGER	1	WD605-50
14.	COLLAR 1" DIA BRIGHT RD. X 41.5MM LONG	1	WD605-51
15.	SPACER	1	WD605-100
16.	BLADE GUARD/MOUNTING BRACKET	1	WD605-105
17.	M12 HEX HD BOLT X 80MM LONG	2	Z26-0901B
18.	BISSEL PIN	1	Z03-22-AW100
19.	4MM "R" CLIP	1	Z36-02
20.	SPRING 16MM O.D. X 1.5MM WIRE X 48MM LONG	1	Z07-34
21.	SPRING 1.09" O.D. X 0.092" WIRE X 1.54" LONG	2	Z07-44
22.	SPRING 1.125 O.D. X 0.125" WIRE X 330MM	1	Z07-46
23.	OILITE OIL RETAINING BUSH 1 1/8" O.D. X 3/4" X 1" L.	3	Z06-105
24.	RUBBER BUFFER ASSY.	1	WD605-BA
25.	CLEVIS C/W PIN	1	Z49-33
26.	1 1/2" X 1/4" DIA TENSION PIN	1	Z03-20-07
27.	M16 HEX NUTS	2	Z18-16
28.	M12 LOCKNUTS	2	Z23-12
29.	M12 HEX HD BOLT X 65MM	1	Z26-0882B
30.	INDICATOR ASSY	1	WD605-PR
31.	M8 GRUB SCREW	1	Z28-008
32.	M8 HEX HD SET X 25MM	4	Z26-040S
33.	M12 BINX LOCKNUT	4	Z23-12BX
35.	5/16" UNF HEX NUT	7	Z15-05
36.	M8 LOCKNUT	9	Z18-08
37.	M6 LOCKNUT (NYLOCK)	2	Z23-06
38.	10MM DIA FLAT WASHER	10	Z11-02-10
39.	8MM DIA FLAT WASHER	5	Z11-02-08
40.	6MM DIA FLAT WASHER	2	Z11-02-06
42.	3MM DIA SPLIT PIN	2	Z03-21-02
43.	BLADE	1	WD605-104
44.	MAIN GUARD	1	WD605-MG
45.	M8 HEX HD SET X 20MM LONG	2	Z26-039S
46.	10MM DIA SPRING WASHER	2	Z12-02-10
47.	12MM DIA FLAT WASHER	2	Z11-02-12
48.	8M DIA SPRING WASHER	9	Z12-02-08
49.	EDGING STRIP	1	Z44-12
50.	SPACER 1" O.D. X 1/2" I.D. X 6MM LONG	2	WD605-65

TANCO AUTOWRAP
 CUT AND START UNIT (1994)
 MAIN ASSEMBLY

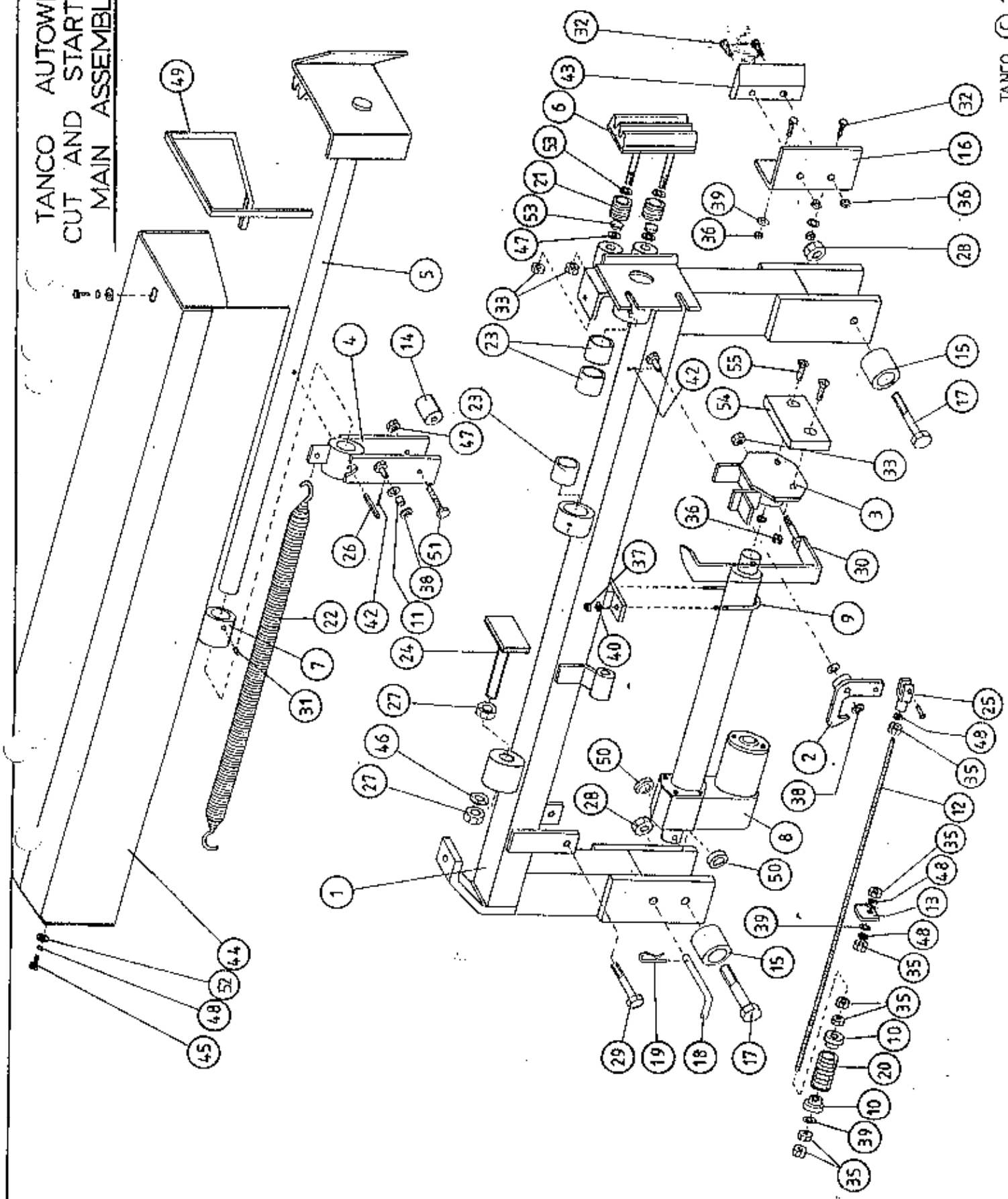


AUTOWRAP

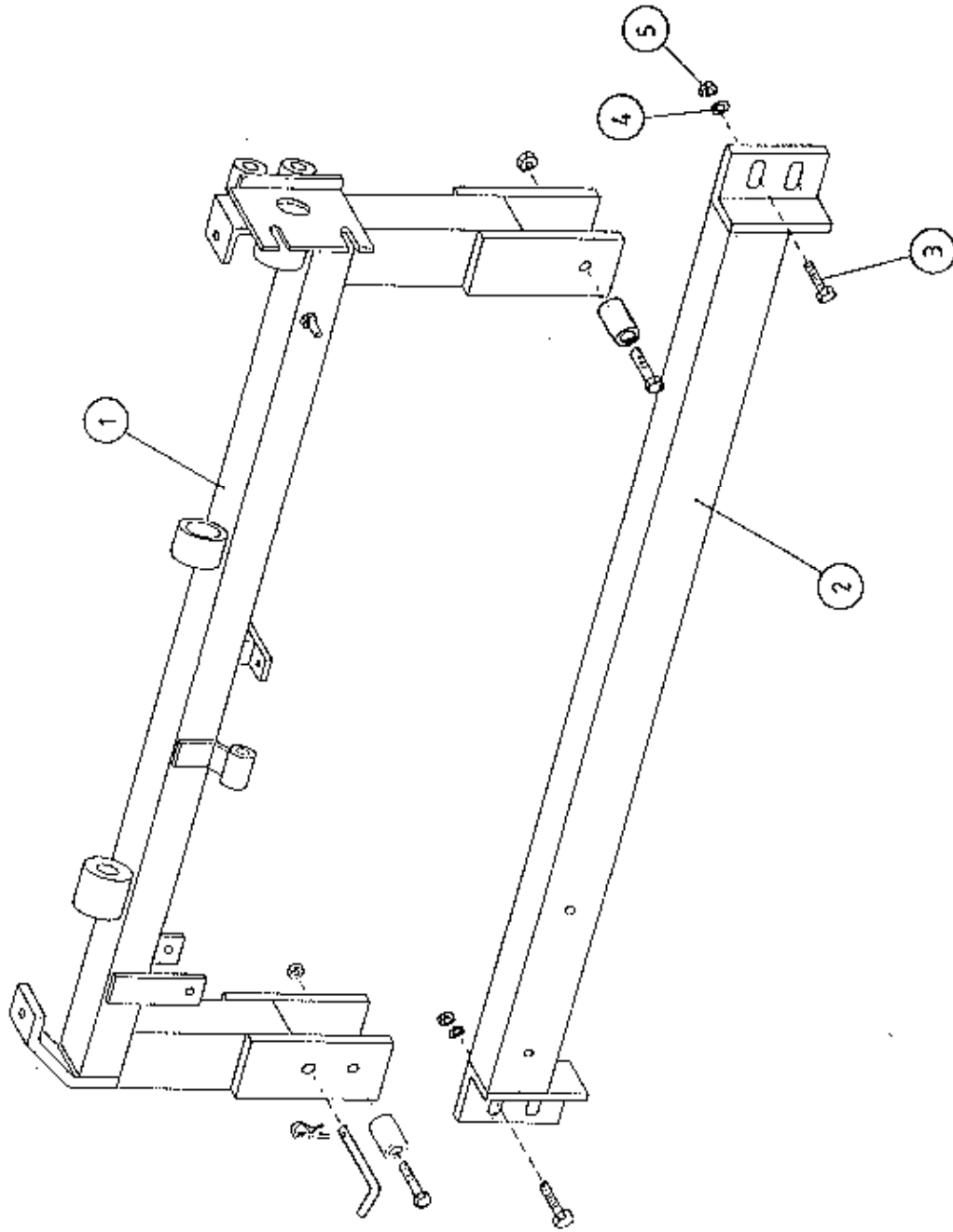
**TANCO AUTOWRAP
CUT AND START UNIT (199)
PARTS LIST**

ITEM NO	DESCRIPTION	QTY	PART-NO.
51.	M10 HEX HDSET X 20MM	2	Z26-060S
52.	8MM DIA FLAT WASHER 1" O.D.	4	Z11-02-081
53.	25MM O.D. X 12MM I.D. FILM GRIP WASHER	4	Z11-02-12FG
54.	PACKER	1	WD605-133
55.	H8 X 40 COUNTER SUNK BOLT	2	Z13-5-08X40

TANCO AUTOWRAP
 CUT AND START UNIT (1994)
 MAIN ASSEMBLY



IANCO AUTOWRAP CUT AND START (1994)
MOUNTING FRAME



WD605-MF

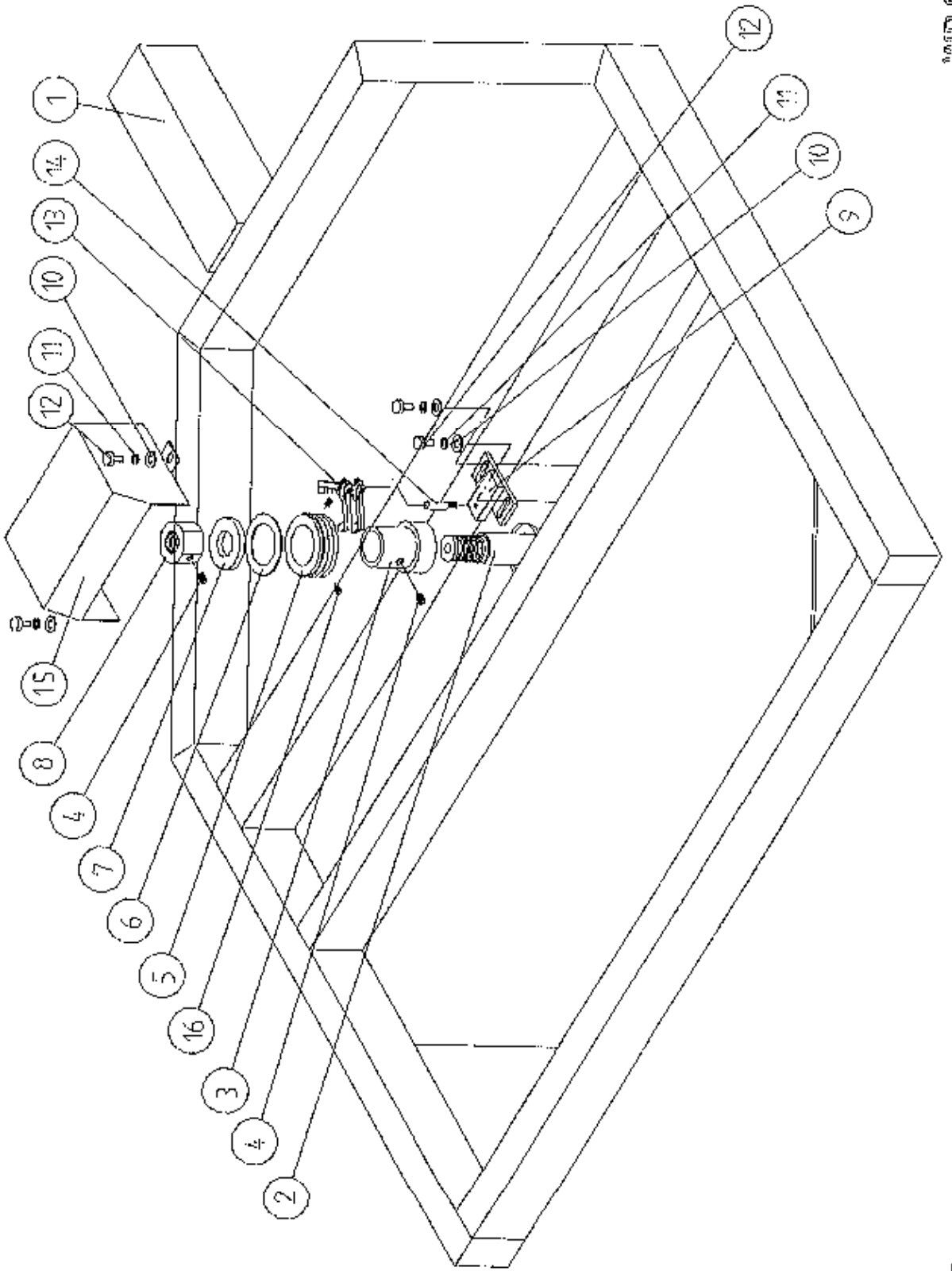
TANCO AUTOWRAP CUT AND START UNIT (1994)

MOUNTING FRAME

PARTS LIST

ITEM NO	DESCRIPTION	QTY	PART-NO
1.	MAIN MOUNTING FRAME ASSY	1	WD605-MF
2.	MAIN FRAME MOUNTING	1	WD605-MFM
3.	M10 HEX HD SET x 30mm LONG	2	Z26-062S
4.	10mm DIA SPRING WASHER	2	Z12-02-10
5.	M10 HEX NUT	2	Z18-10

TANCO AUTOWRAP - CUT AND START UNIT (1994)
SLIP RING ASSEMBLY

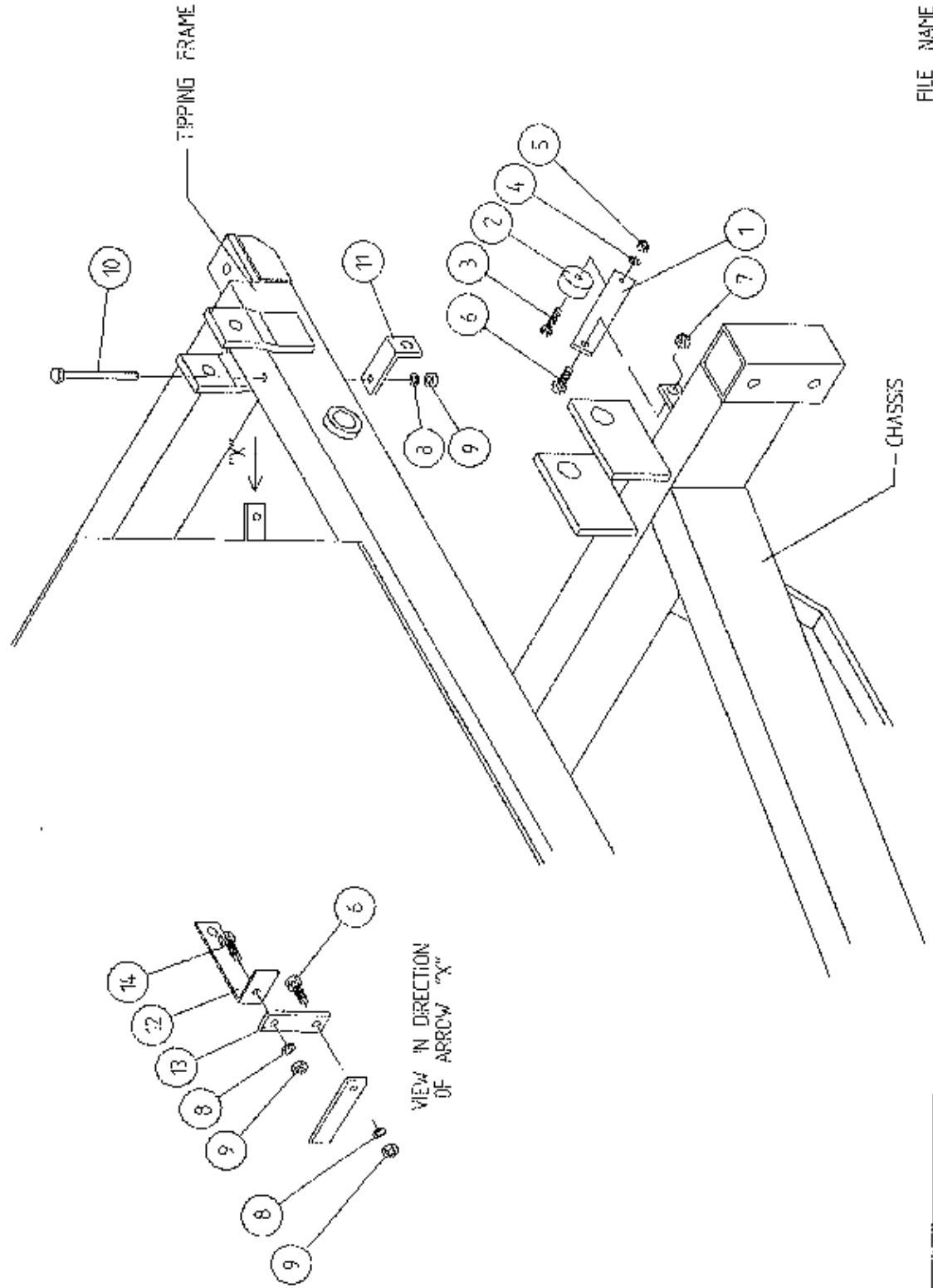


**TANCO AUTOWRAP CUT AND START UNIT (1994)
SLIP RING ASSY.**

PARTS LIST

<u>ITEM NO.</u>	<u>DESCRIPTION</u>	<u>QTY.</u>	<u>PART-NO.</u>
1.	UNDERSIDE OF TIPPING FRAME	1	
2.	TURNTABLE CENTRE SHAFT	1	WD60-768
3.	SLIP RING MOUNTING SLEEVE	1	WD60-825
4.	M8 GRUB SCREW x 6 mm LONG	2	Z28-007
5.	SLIP RING ASSY.	1	ZD605-308
6.	INSULATING RING	1	ZD605-350
7.	LOCKING COLLAR	1	WD60-770
8.	1 1/4" UNC HEX NUT	1	Z18-300
9.	SLIP RING MOUNTING BRACKET ASSY	1	WD605-SRMB
10.	10mm DIA FLAT WASHER 1" O.D.	4	Z11-02-101
11.	10mm SPRING WASHER	4	Z12-02-10
12.	M10 HEX HD SET x 20mm	4	Z26-060S
13.	BRUSHES	2	ZD605-306
14.	INSULATOR SLEEVE	1	ZD605-302
15.	SLIP RING GUARD ASSY	1	WD605-SRG
16.	M5 GRUB SCREW	2	Z28-005

TANCO AUTOWRAP
 CUT AND START UNIT
 SENSOR & MAGNET MOUNTING BRACKETS



TANCO AUTOWRAP CUT AND START UNIT 1994SENSOR AND MAGNET MOUNTING BRACKETSPARTS LIST

ITEM NO.	DESCRIPTION	QTY.	PART-NO.
1.	MAGNET MOUNTING BRACKET	1	WD605-57
2.	MAGNET	1	D6043
3.	M6 HEX HD SET x 30mm LONG	1	Z26-022S
4.	6mm DIA FLAT WASHER	1	Z11-02-06
5.	M6 LOCKNUT	1	Z23-06
6.	M8 HEX HD SET x 25mm LONG	2	Z26-040S
7.	M8 LOCKNUT (NYLOCK)	1	Z23-08
8.	8mm DIA SPRING WASHER	3	Z12-02-08
9.	M8 HEX NUT	3	Z18-08
10.	M8 HEX HD SET x 100mm LONG	1	Z26-057S
11.	SENSOR MOUNTING BRACKET	1	WD605-58
12.	ROTATE SENSOR MOUNTING BRACKET	1	WD605-140
13.	MOUNTING FLAT	1	WD605-07
14.	M8 HEX HD SET x 20mm LONG	1	Z26-020S